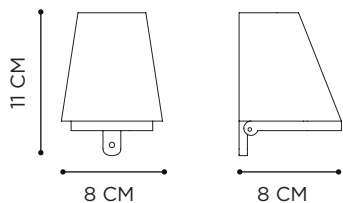


BEAMY WALL

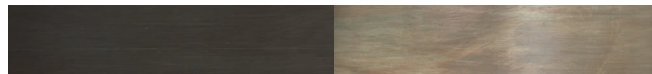


ANTIQUE ZINC



ANTIQUE BRASS

WEATHERED BRASS



POWDER COATED ALUMINIUM: ANTHRACITE/WHITE



| REFERENCE | DESCRIPTION | LIGHTBULB SOCKET | WATT | INPUT | IP | EEC |
|-----------|-----------------|--------------------------------------|------|-------|----|-----|
| BMYW230AZ | ANTIQUE ZINC | GU10 - LED FLAT OPTIC (NOT INCLUDED) | 5 W | 230V | 44 | A-G |
| BMYW230AB | ANTIQUE BRASS | GU10 - LED FLAT OPTIC (NOT INCLUDED) | 5 W | 230V | 44 | A-G |
| BMYW230WB | WEATHERED BRASS | GU10 - LED FLAT OPTIC (NOT INCLUDED) | 5 W | 230V | 44 | A-G |
| BMYW230A | ANTHRACITE | GU10 - LED FLAT OPTIC (NOT INCLUDED) | 5 W | 230V | 44 | A-G |
| BMYW230WR | WHITE | GU10 - LED FLAT OPTIC (NOT INCLUDED) | 5 W | 230V | 44 | A-G |



ANTIQUE ZINC



ANTIQUE BRASS



WEATHERED BRASS



ANTHRACITE COATED



WHITE COATED